

Optum Financial™

Health Savings Accounts (HSA)

.....
Optum Financial Webinar



What is an HSA?

A health savings account, or HSA, is an account that saves you money by letting you use income tax-free dollars to pay for qualified medical, dental, & vision expenses



Sign up during enrollment. HSAs are compatible with a qualifying high deductible health plan (HDHP).



Contribute income-tax free money to your account –up to IRS limits – and adjust at any time during the year.



Spend your HSA dollars on hundreds of items – like glasses, Rx refills, and doctor visits.



Earn potential interest on your balance. Choose to invest HSA funds for potential added growth, after meeting minimum balance.



Balances carry over from year-to-year, to new jobs, and into retirement.



An HSA is designed to help you save money for use today or later



How an HSA helps you save money

Save, earn and spend income tax-free (legally)



Money in. Deposits are exempt from income tax



Earnings. Interest and potential investment growth are income tax-free



Money out. Funds spent on qualified medical expenses are income tax-free

HSA savings in action - meet Jake

Meet Jake. He's 27 and considers himself fairly healthy. When he started his new job, he decided to open an HSA and contribute \$100 per month. Because he hasn't had many medical expenses, he decided not to touch the balance during his first year. Once he turns 40, he begins using \$500 each year after that to cover his health costs. Here's how Jake's balance grows:



Assuming 22% federal income tax and 7.65% FICA. Results and amount will vary depending on your particular circumstances

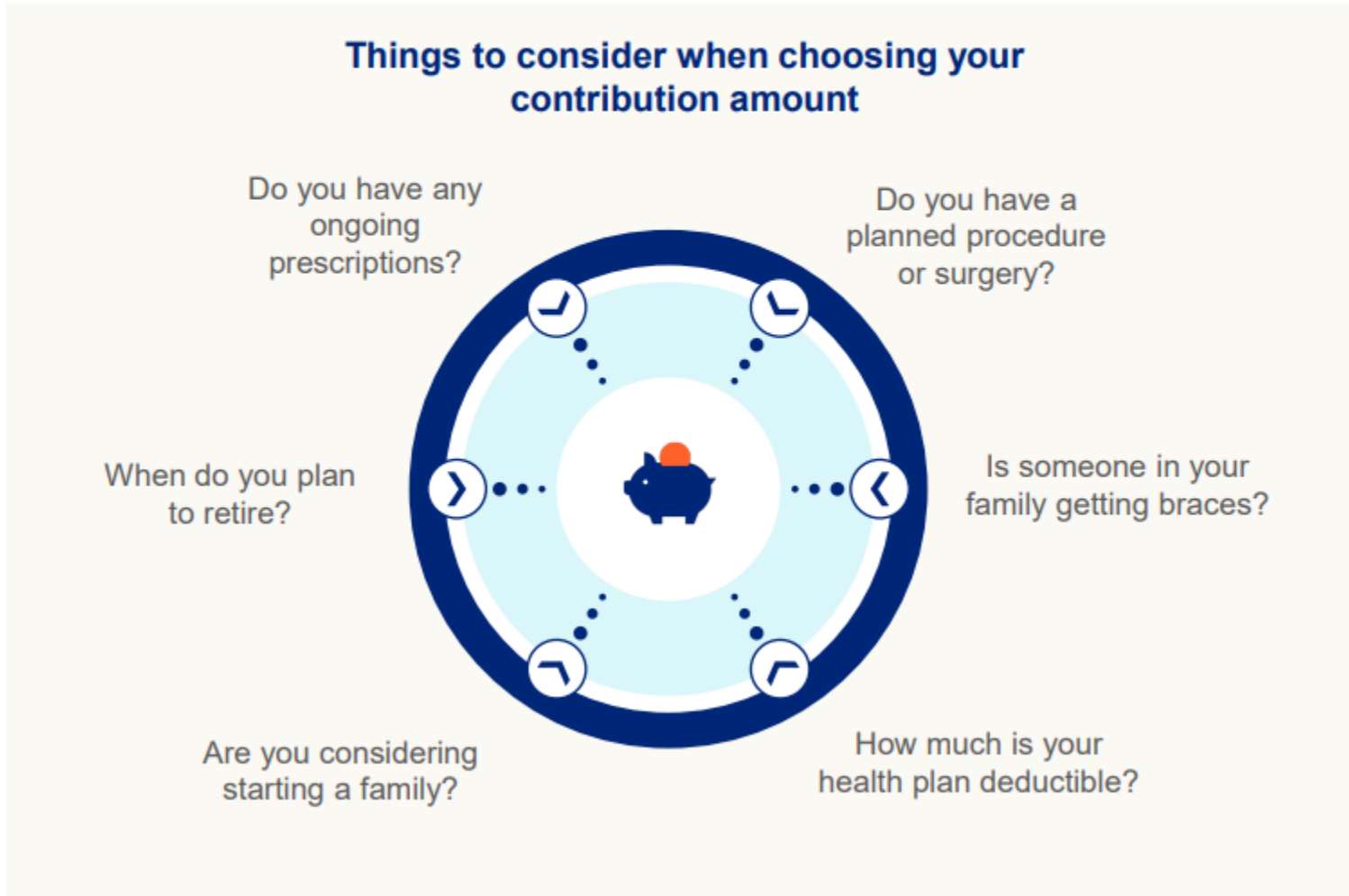
How do I know if I'm eligible for an HSA?

Most people covered under a qualifying high-deductible health plan (HDHP) are eligible. Here are a few more IRS requirements.



- You are not covered by any other health plan that is not an HDHP
- You are not enrolled in Medicare, TRICARE or TRICARE for Life
- You haven't received Veterans Affairs (VA) benefits within the past three months, except for preventive care; if you have a disability rating from the VA, this exclusion doesn't apply
- You can't be claimed as a dependent on someone else's tax return
- You do not have a health care flexible spending account (FSA) or health reimbursement arrangement (HRA). Alternative plan designs, such as a limited-purpose FSA or HRA, might be permitted.
- Other restrictions and exceptions may also apply. We recommend that you consult a tax, legal or financial advisor to discuss your personal circumstances

How much should I contribute? How much can I contribute?



2023 Limits

Individual: \$3,850

Family: \$7,750

2024 Limits

Individual: \$4,150

Family: \$8,300

When you are 55 or older, and not enrolled in Medicare, you can fund an additional **\$1,000 each year**, called a catch-up contribution.

Investing in your HSA

Options for every type of investor



1

Mutual funds – *if you'd like to choose from a pre-selected list of mutual funds*

- A diverse variety of mutual funds
- High Morningstar ratings
- Low expense ratios

2

Digitally managed investments – *if you're short on time or need help*

- Online investment support from Betterment
- Brief questionnaire on goals, risk profile
- Low-cost exchange traded funds (ETFs)
- Auto-deposits and automated rebalancing

Savings potential

Let's say you contribute \$3,000 a year to your HSA until retirement. Assuming you use \$1,500 a year for medical expenses, earn 7% a year in interest and investments, and reinvest all earnings, your savings can really add up. But, the earlier you start, the more potential you have. See how starting in your early years can really pay off.

Starting age	HSA value at age 65 ¹
25	\$320,420
35	\$151,613
45	\$65,799
55	\$22,176

Investments are not FDIC insured, are not bank issued or guaranteed by Optum Financial or its subsidiaries, including Optum Bank, and are subject to risk including fluctuations in value and the possible loss of the principal amount invested.

Account holders must meet the minimum balance to begin investing, this amount may vary, check your online account or plan documents.

¹Hypothetical example for illustrative purposes only. Amounts will vary depending on your unique circumstances.

What's covered under an HSA?

Save on out-of-pocket costs head to toe



Acupuncture



Chiropractic Care



Eye exams, glasses, & contacts



Flu shots



Nursing services



Orthodontia (non cosmetic)



Physical exam



Physical therapy



Prescription drugs & refills



Psychiatric care



Sunscreen, SPF 15+



Wheelchair, walkers, crutches, & canes

Use the Qualified
Medical Expense Tool
on
optumfinancial.com
to see if your specific
expense qualifies for
reimbursement

How can I access my account?



Online portal

- Make deposits
- Pay bills
- Reimburse yourself
- Manage your investment activity



Mobile app

- Pay bills, track payments, and reimburse yourself
- Search for qualified medical expenses
- Capture and submit receipts
- Easily deposit funds
- Calculate your contributions
- Update your beneficiary



Payment card

- Pay the easier way at the doctor's office, chiropractor or pharmacy
- Use your card to pay for qualified medical expenses online
- Order additional cards for family members covered under your plan



It's easy to check account information, submit receipts, reimburse yourself

Common questions ?

You've got questions, we've got answers



Who owns my HSA?



Do I need to keep my receipts?



I already have an HSA. Can I open another?

More questions? Visit optumfinancial.com for other frequently asked questions.

Optum

Optum is a registered trademark of Optum, Inc. in the U.S. and other jurisdictions. All other brand or product names are the property of their respective owners. Because we are continuously improving our products and services, Optum reserves the right to change specifications without prior notice. Optum is an equal opportunity employer.

© 2022 Optum, Inc. All rights reserved.